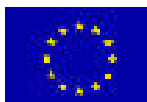


Seagull: Development programmes for rural areas



Gdansk December 2 2004

Why local mobilization?
Rural development and
bottom up approach in
a EU perspective

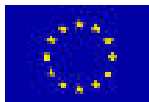


This project is co-financed by the European Union
Baltic Sea Region INTERREG III B



Observations

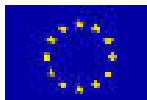
- ◆ Speakers from five regions: Kronoberg county, Kaliningrad Region, Bornholm, Pomeranian region, Kalmar county
- ◆ Active participation and debate
- ◆ Big commitment to the issues
- ◆ Bottom up perspective from an European angel
- ◆ Concrete examples of local mobilization





Summary

- Local mobilization essential for EU future
- Tool to close the gap between politicians and citizens
- Instrument to legitimise EU
- Several examples confirm local mobilization as a strategic tool for sustainable development
- Practical aspect important, ex. Ozersk
- Local identity, Långasjö, Pomeranian Region





Conclusions

- Local mobilization is crucial for ERB area, brings added value
- Importance of stressing rural development/bottom up perspective in JTDP
- Proposal for ERB Academy for rural development

